

Brammer's Ossett

A presentation of Ossett paintings
by Douglas Brammer
for Ossett Historical Society

28th November 2016

Douglas Brammer

- Born in Ossett in 1937 and was brought up in Flushdyke.
- Educated at Flushdyke School and Ossett Grammar School.
- Worked for many years in the engineering industry at local companies like Richard Sutcliffe's.
- Become involved with the Labour Union Movement as a union convenor.
- Completed a Certificate in Industrial Relations at Leeds University and later studied for a Diploma in Social Work at Huddersfield University.
- Worked in the Probation Service and later as a Social Worker with young people.
- Was Chairman of Governors at Flushdyke Primary School.
- Now retired.

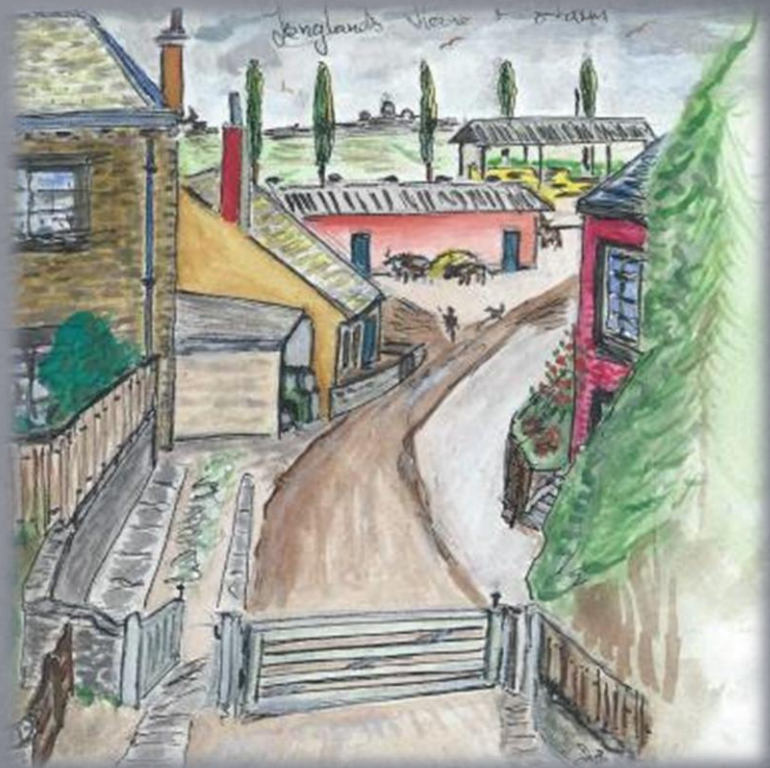
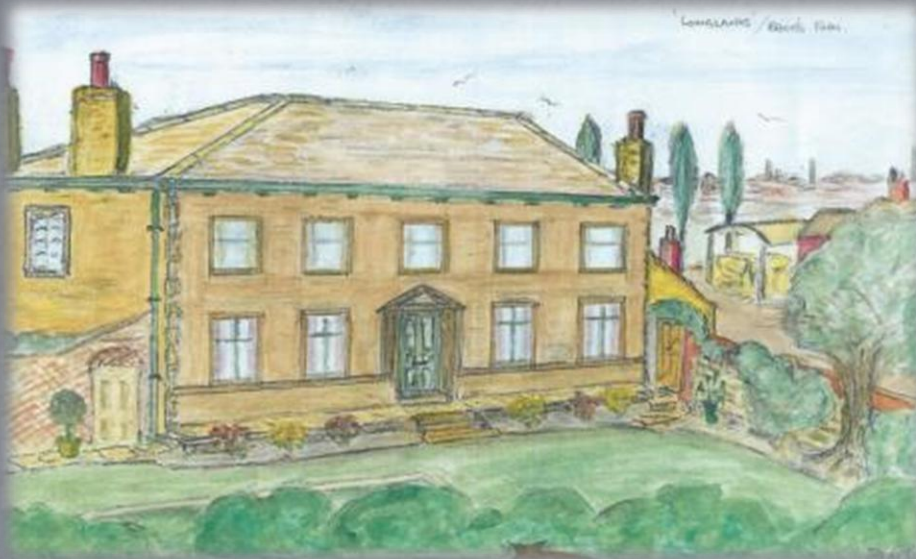
Railway Hotel, Flushdyke



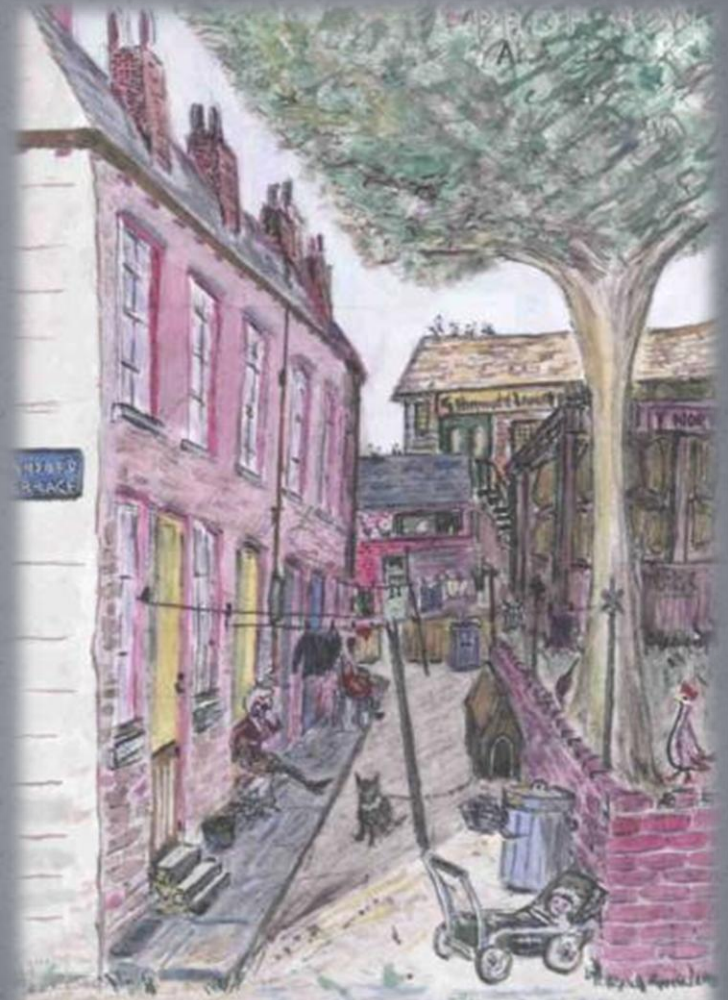
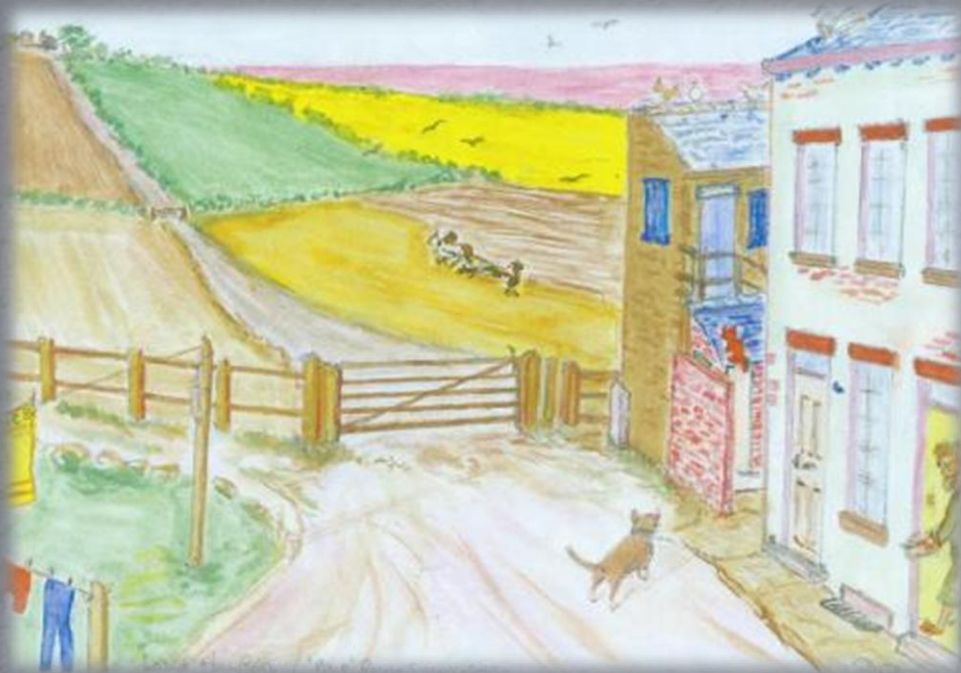
Spenstead Railway Bridge



Longlands House and Tommy Brooks Farm



Prop Row or Sandbed Terrace



Fern House W.M.C.

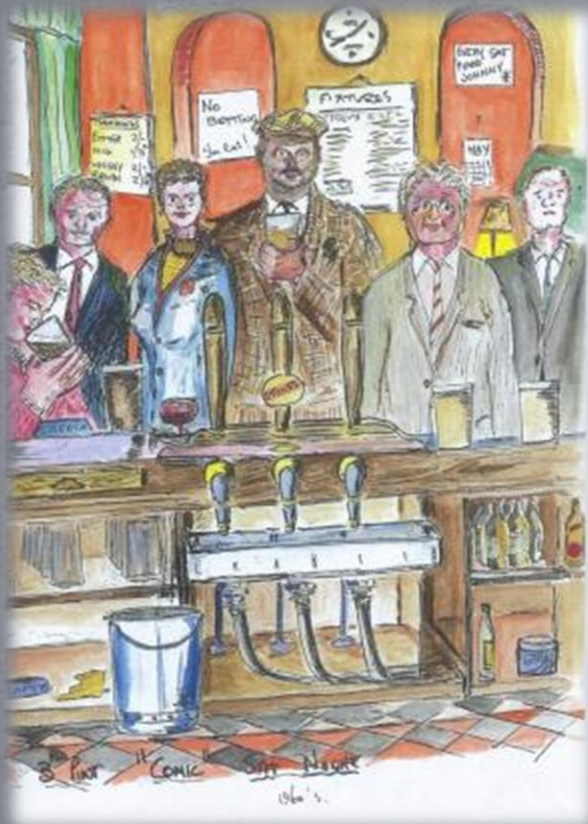


Vironita Works

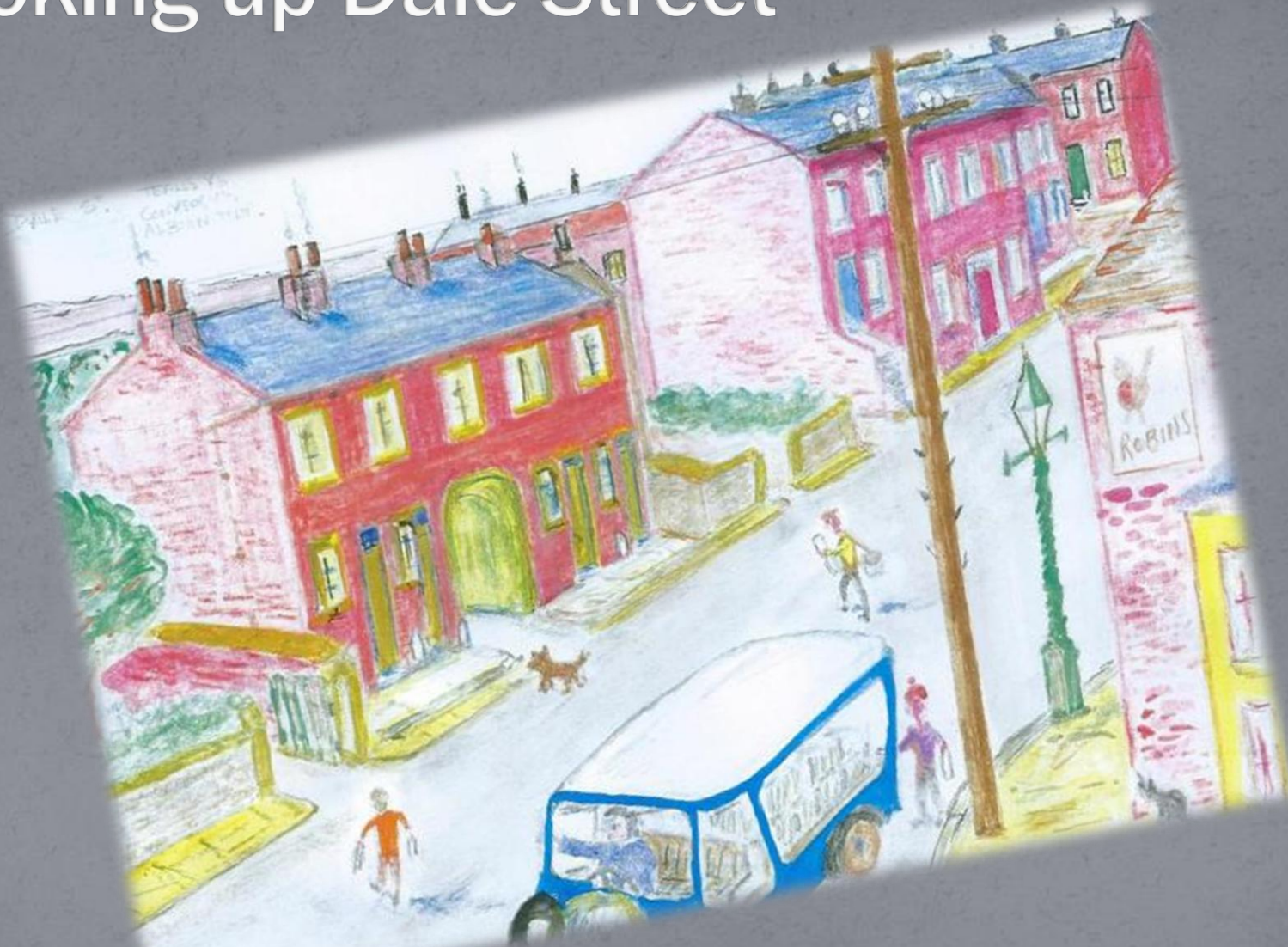
OLD VIRONITA WORKS
NEW 'GOSPEL' HALL 1950's
Arthur Mitchell's Pig Pen



Commercial Hotel "The Comic"



Looking up Dale Street

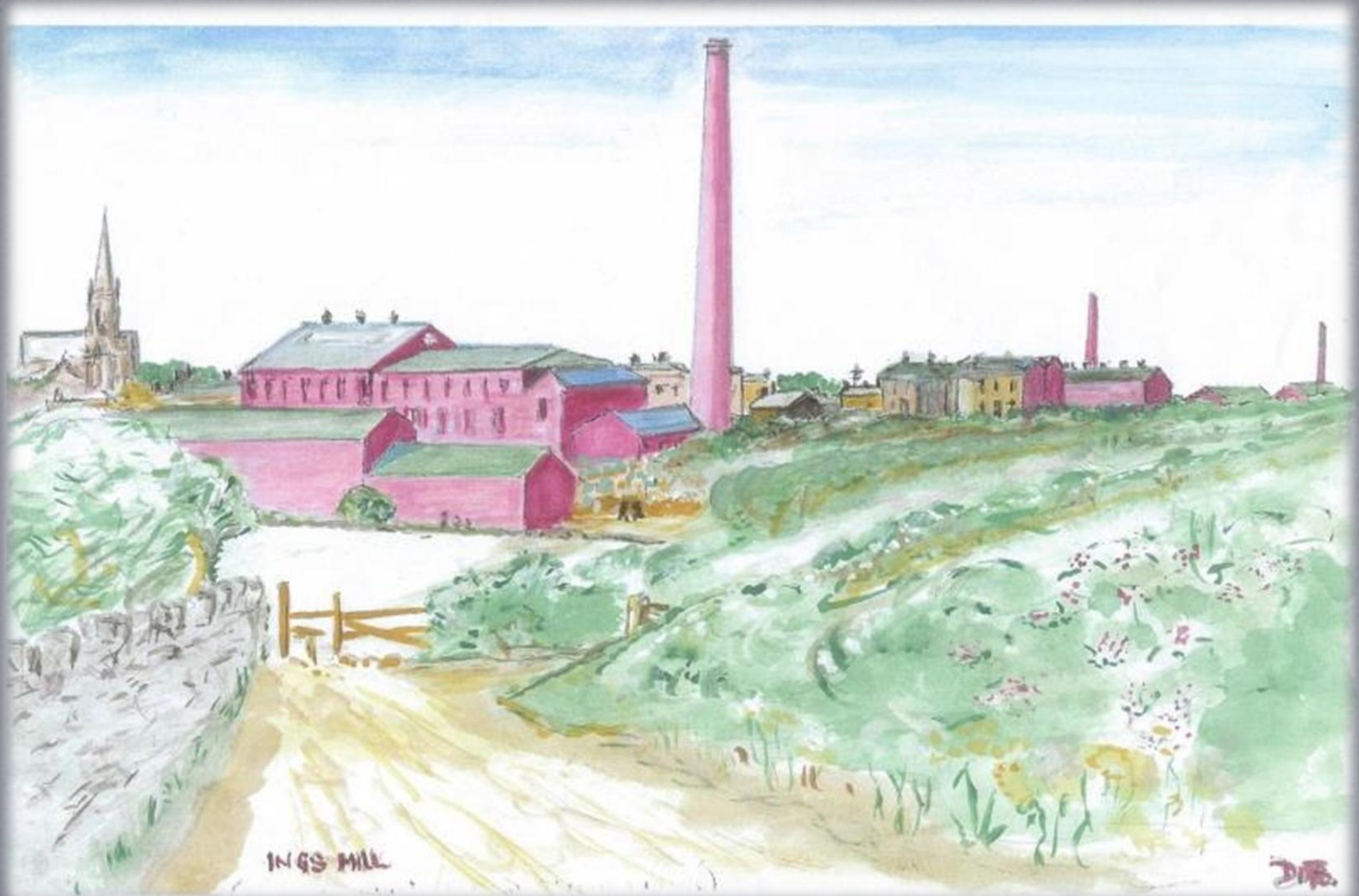


Thomlinson's Yard, Dale Street



GEORGE RAWDEN'S
1833 "MARY KNAGGS"

Ings Mill, Dale Street



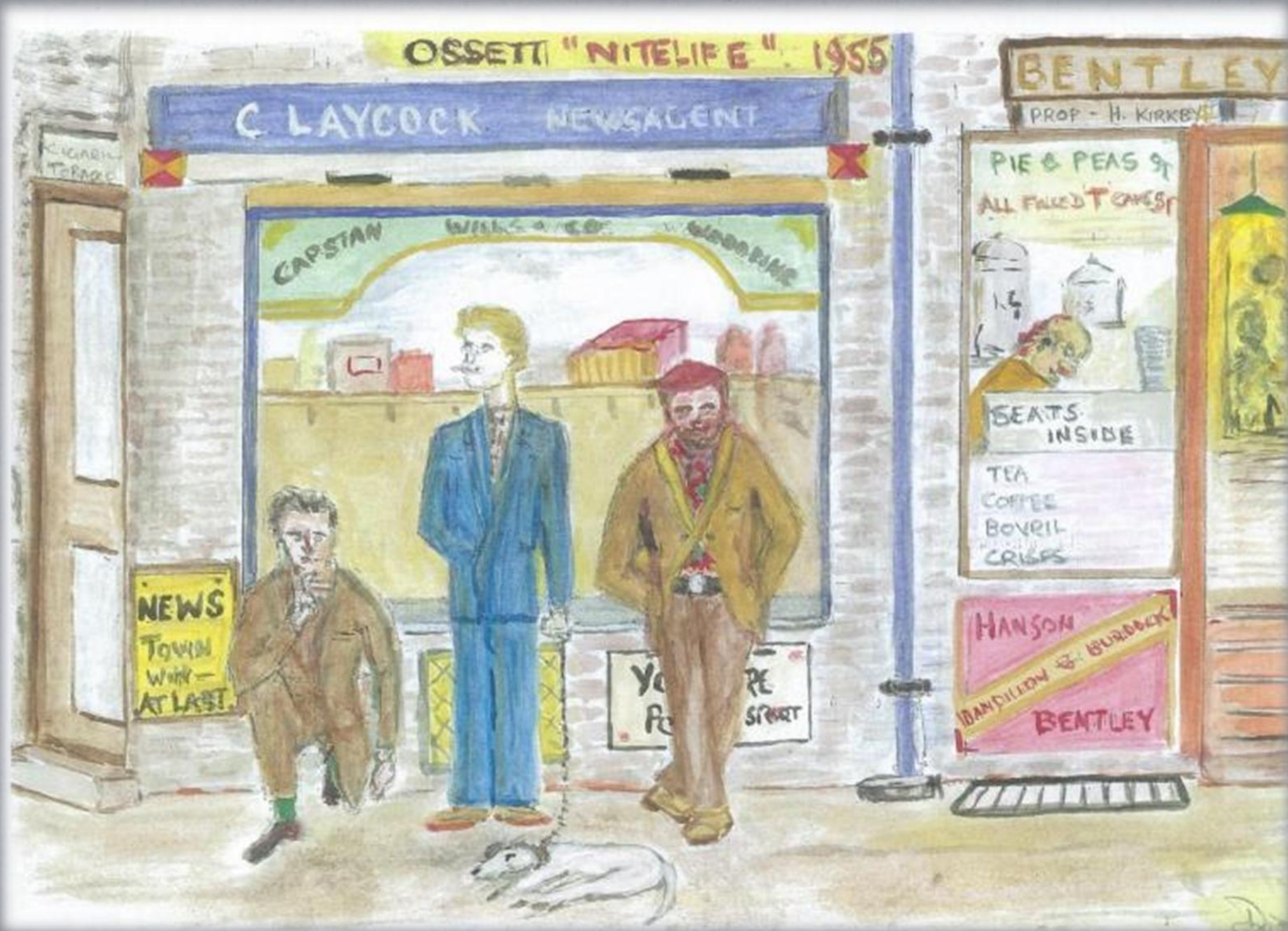
Horse and Jockey and Gedham Feast



Buses at Town End



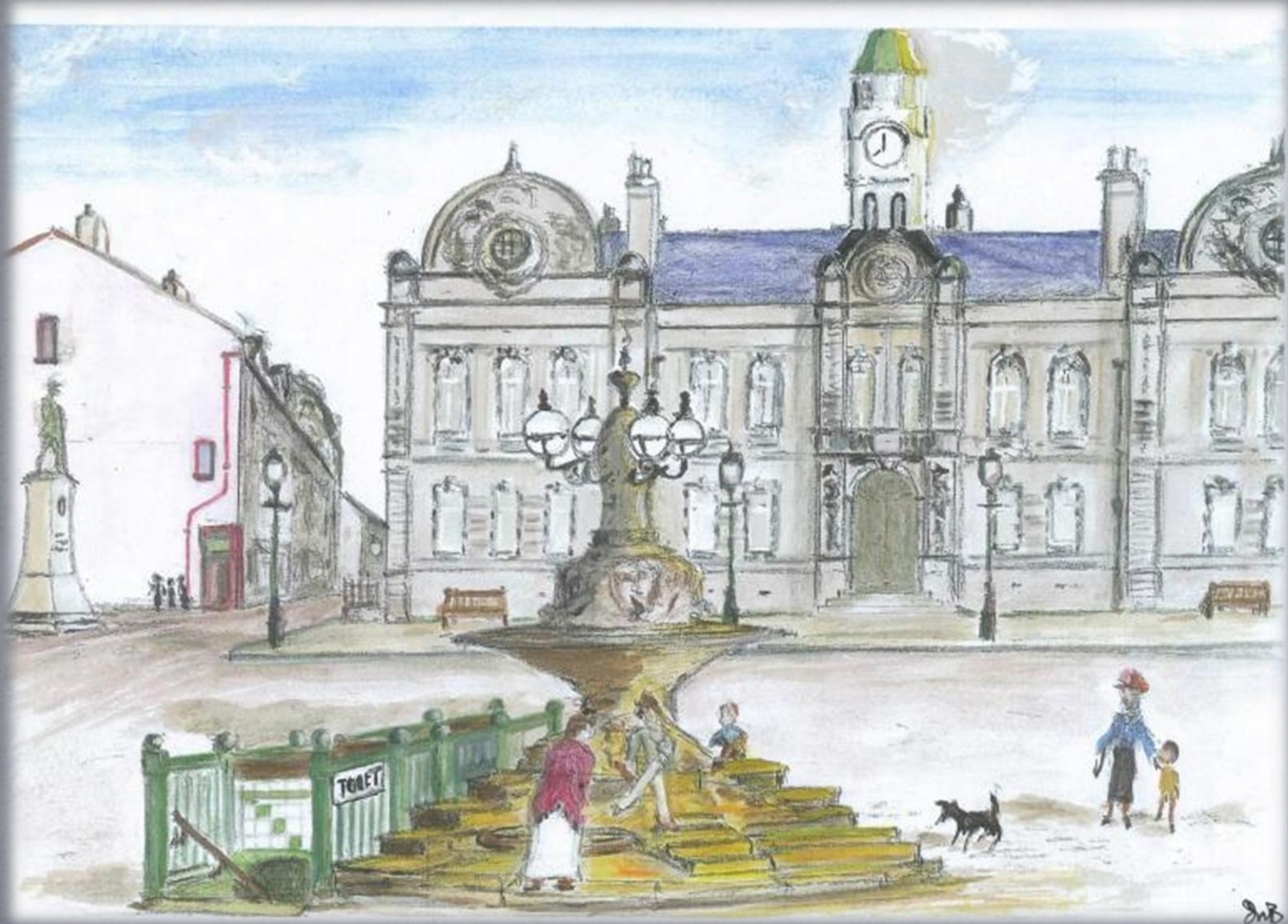
Fly By Nites



Palladium Cinema



Hannah Pickard Fountain



The End

- Are there any questions please?
- A copy of this presentation and all the pictures featured, plus many more by Douglas Brammmer are available on the ossett.net web site